

## Weight Worksheets (Metric)

1. The total weight in grams of a can of tomatoes and a jar of baby food is shown to the right.

- The jar of baby food weighs 113 grams. How much does the can of tomatoes weigh?
- How much more does the can of tomatoes weigh than the jar of baby food?



2. The weight of a pen in grams is shown to the right.

- What is the total weight of 10 pens?
- An empty box weighs 82 grams. What is the total weight of a box of 10 pens?



3. The total weight of an apple, lemon, and banana in grams is shown to the right.

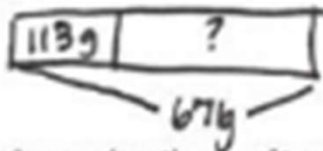
- If the apple and lemon together weigh 317 grams, what is the weight of the banana?
- If we know the lemon weighs 68 grams less than the banana, how much does the lemon weigh?
- What is the weight of the apple?



## Weight Worksheets (Metric)

1. The total weight in grams of a can of tomatoes and a jar of baby food is shown at right.

a. The jar of baby food weighs 113 grams. How much does the can of tomatoes weigh?

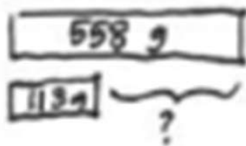


$$\begin{array}{r} 671 \\ -113 \\ \hline 558 \end{array}$$

The can of tomatoes weighs 558 grams.



b. How much more does the can of tomatoes weigh than the jar of baby food?



$$\begin{array}{r} 558 \\ -113 \\ \hline 445 \end{array}$$

The can of tomatoes weighs 445 grams more than the jar of baby food.

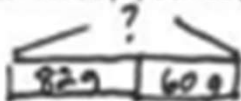
2. The weight of a pen in grams is shown at right.

a. What is the total weight of 10 pens?

$$10 \times 6g = 60g$$

The total weight of 10 pens is 60 grams.

b. An empty box weighs 82 grams. What is the total weight of a box of 10 pens?



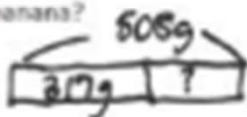
$$82 + 60 = 142$$

The total weight of a box and 10 pens is 142 grams.



3. The total weight of an apple, lemon, and banana in grams is shown at right.

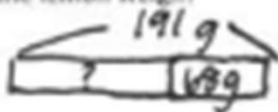
a. If the apple and lemon together weigh 317 grams, what is the weight of the banana?



$$\begin{array}{r} 508 \\ -317 \\ \hline 191 \end{array}$$

The banana weighs 191 grams.

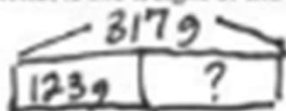
b. If we know the lemon weighs 68 grams less than the banana, how much does the lemon weigh?



$$\begin{array}{r} 191 \\ -68 \\ \hline 123 \end{array}$$

The lemon weighs 123 grams.

c. What is the weight of the apple?



$$\begin{array}{r} 317 \\ -123 \\ \hline 194 \end{array}$$

The apple weighs 194 grams.

