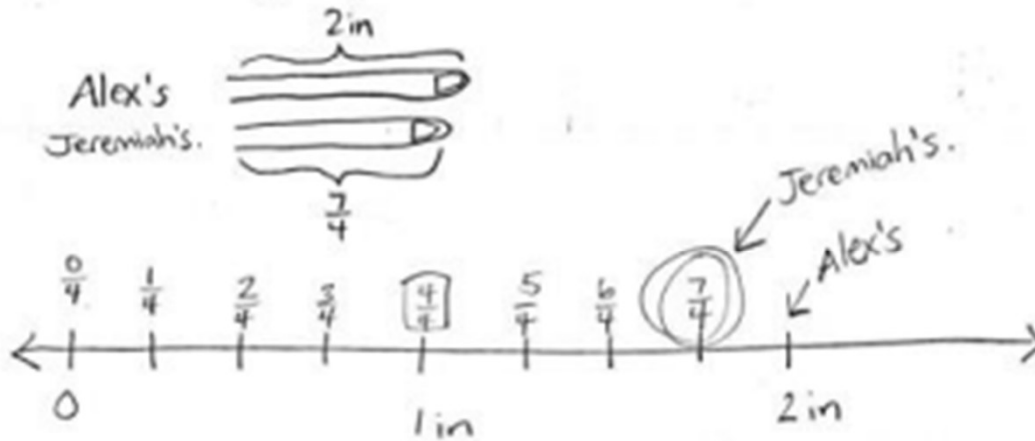


Fraction Worksheets (Fractions on the Number Line)

4. For a measurement project in math class, students measured the lengths of their pinky fingers. Alex's measured 2 inches long. Jerimiah's pinky finger was $\frac{7}{4}$ inches long. Whose finger is longer? Draw a number line to help prove your answer.
5. Marcy ran 4 km after school. She stopped to tie her shoelace at $\frac{7}{5}$ km. Then she stopped to switch songs on her iPod at $\frac{12}{5}$ km. Draw a number line showing Marcy's run. Include her starting and finishing points and the 2 places where she stopped.

Fraction Worksheets (Fractions on the Number Line)

4. For a measurement project in math class, students measured the lengths of their pinky fingers. Alex's measured 2 inches long. Jeremiah's pinky finger was $\frac{7}{4}$ inches long. Whose finger is longer? Draw a number line to help prove your answer.



$\frac{7}{4}$ comes before 2 on the number line. So Alex's finger is longer.

5. Marcy ran 4 km after school. She stopped to tie her shoelace at $\frac{7}{5}$ km. Then she stopped to switch songs on her iPod at $\frac{12}{5}$ km. Draw a number line showing Marcy's run. Include her starting and finishing points and the 2 places where she stopped.

