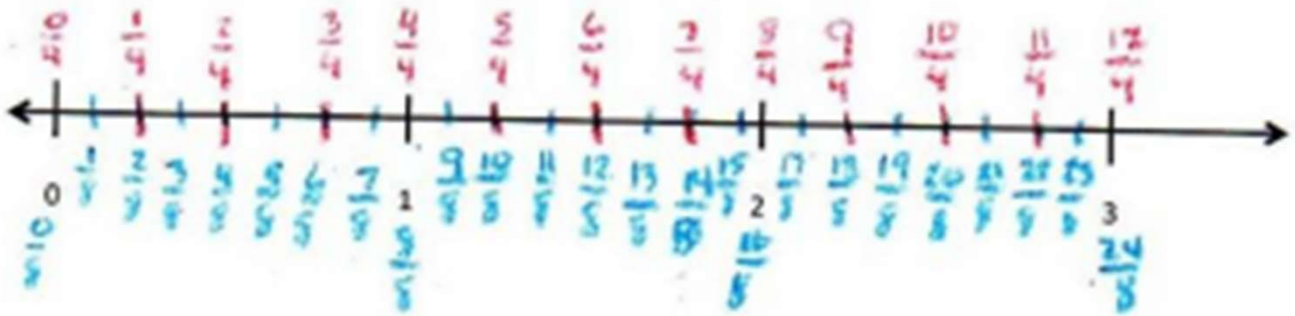


Equivalent Fraction Worksheets



1. On the number line above, use a red colored pencil to divide each whole into 4 unit fractions and label each one above the line. Use a fraction strip to help you estimate if necessary.
2. On the number line above, use a blue colored pencil to divide each whole into 8 unit fractions and label each one below the line. Re-fold your fraction strip from #1 to help you estimate.
3. List the fractions that name the same place on the number line.
4. Using your number line to help, what red fraction and what blue fraction would be equal to $\frac{7}{2}$? Draw the part of the number line that would include these fractions below and label it.

Equivalent Fraction Worksheets



1. On the number line above, use a red crayon to divide each whole into 4 unit fractions and label each one above the line. Use a fraction strip to help you estimate if necessary.
2. On the number line above, use a blue crayon to divide each whole into 8 unit fractions and label each one below the line. Re-fold your fraction strip from #1 to help you estimate.
3. List the fractions that name the same place on the number line.

$\frac{1}{4} = \frac{2}{8}$	$\frac{2}{4} = \frac{4}{8}$	$\frac{3}{4} = \frac{6}{8}$	$\frac{4}{4} = \frac{8}{8}$	$\frac{5}{4} = \frac{10}{8}$	$\frac{6}{4} = \frac{12}{8}$	$\frac{7}{4} = \frac{14}{8}$	$\frac{8}{4} = \frac{16}{8}$	$\frac{9}{4} = \frac{18}{8}$	$\frac{10}{4} = \frac{20}{8}$	$\frac{11}{4} = \frac{22}{8}$	$\frac{12}{4} = \frac{24}{8}$
-----------------------------	-----------------------------	-----------------------------	-----------------------------	------------------------------	------------------------------	------------------------------	------------------------------	------------------------------	-------------------------------	-------------------------------	-------------------------------

4. Using your number line to help, what red fraction and what blue fraction would be equal to $\frac{7}{2}$? Draw the part of the number line that would include these fractions below and label it.

