

NAME _____

DATE _____

PERIOD _____

Unit 3, Lesson 13: More Solutions to Linear Equations

Let's find solutions to more linear equations.

13.1: Coordinate Pairs

For each equation choose a value for x and then solve to find the corresponding y value that makes that equation true.

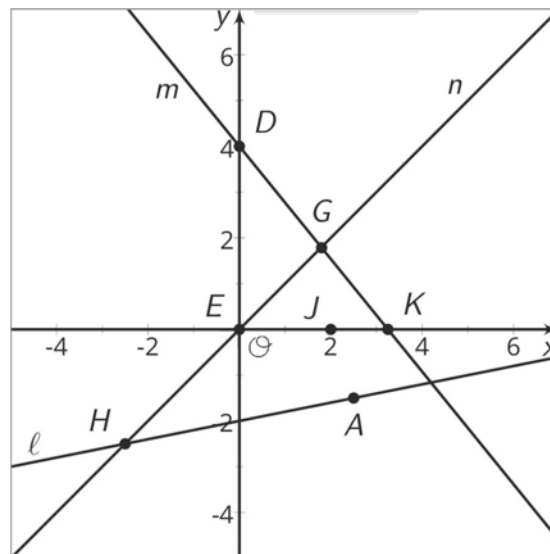
1. $6x = 7y$

2. $5x + 3y = 9$

3. $y + 5 - \frac{1}{3}x = 7$

13.2: True or False: Solutions in the Coordinate Plane

Here are graphs representing three linear relationships. These relationships could also be represented with equations.



For each statement below, decide if it is true or false. Explain your reasoning.

1. $(4, 0)$ is a solution of the equation for line m .
2. The coordinates of the point G make both the equation for line m and the equation for line n true.

NAME

DATE

PERIOD

- $x = 0$ is a solution of the equation for line n .
- $(2, 0)$ makes both the equation for line m and the equation for line n true.
- There is no solution for the equation for line ℓ that has $y = 0$.
- The coordinates of point H are solutions to the equation for line ℓ .
- There are exactly two solutions of the equation for line ℓ .
- There is a point whose coordinates make the equations of all three lines true.

After you finish discussing the eight statements, find another group and check your answers against theirs. Discuss any disagreements.

13.3: I'll Take an X, Please

One partner has 6 cards labeled A through F and one partner has 6 cards labeled a through f. In each pair of cards (for example, Cards A and a), there is an equation on one card and a coordinate pair, (x, y) , that makes the equation true on the other card.

- The partner with the equation asks the partner with a solution for either the x -value or the y -value and explains why they chose the one they did.
- The partner with the equation uses this value to find the other value, explaining each step as they go.
- The partner with the coordinate pair then tells the partner with the equation if they are right or wrong. If they are wrong, both partners should look through the steps to find and correct any errors. If they are right, both partners move onto the next set of cards.
- Keep playing until you have finished Cards A through F.

Are you ready for more?

Consider the equation $ax + by = c$, where a , b , and c are positive numbers.

- Find the coordinates of the x - and y -intercepts of the graph of the equation.

NAME

DATE

PERIOD

2. Find the slope of the graph.

Lesson 13 Summary

Let's think about the linear equation $2x - 4y = 12$. If we know $(0, -3)$ is a solution to the equation, then we also know $(0, -3)$ is a point on the graph of the equation. Since this point is on the y -axis, we also know that it is the vertical intercept of the graph. But what about the coordinate of the horizontal intercept, when $y = 0$? Well, we can use the equation to figure it out.

$$\begin{aligned}2x - 4y &= 12 \\2x - 4(0) &= 12 \\2x &= 12 \\x &= 6\end{aligned}$$

Since $x = 6$ when $y = 0$, we know the point $(6, 0)$ is on the graph of the line. No matter the form a linear equation comes in, we can always find solutions to the equation by starting with one value and then solving for the other value.

NAME _____

DATE _____

PERIOD _____

Unit 3, Lesson 13: More Solutions to Linear Equations

1. For each equation, find y when $x = -3$. Then find x when $y = 2$

a. $y = 6x + 8$

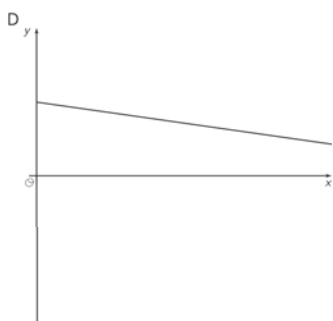
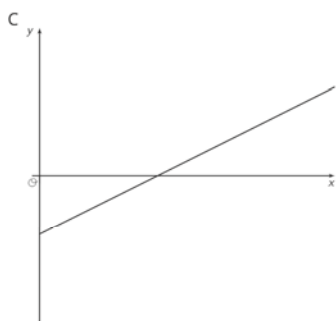
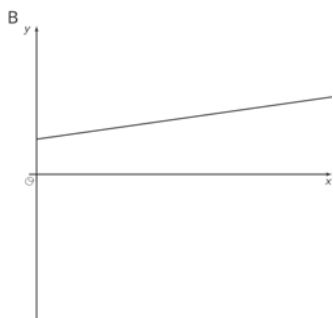
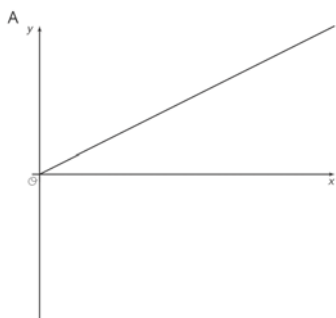
b. $y = \frac{2}{3}x$

c. $y = -x + 5$

d. $y = \frac{3}{4}x - 2\frac{1}{2}$

e. $y = 1.5x + 11$

2. Match each graph of a linear relationship to a situation that most reasonably reflects its context.



1. y is the weight of a kitten x days after birth.
2. y is the distance left to go in a car ride after x hours of driving at a constant rate toward its destination.
3. y is the temperature, in degrees C, of a gas being warmed in a laboratory experiment.
4. y is the amount of calories consumed eating x crackers.

(from Unit 3, Lesson 9)

3. True or false: The points $(6, 13)$, $(21, 33)$, and $(99, 137)$ all lie on the same line. The equation of the line is $y = \frac{4}{3}x + 5$. Explain or show your reasoning.

NAME _____

DATE _____

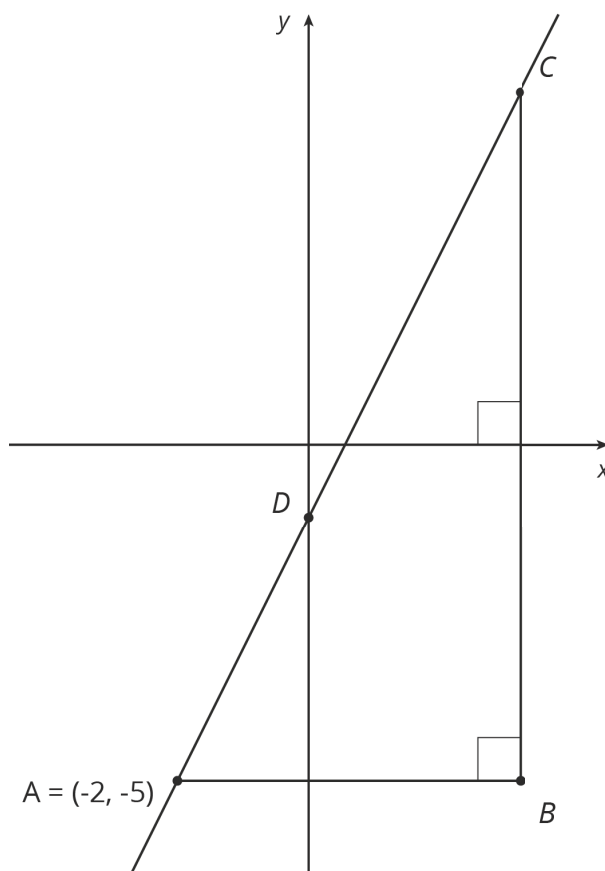
PERIOD _____

4. Here is a linear equation: $y = \frac{1}{4}x + \frac{5}{4}$

a. Are $(1, 1.5)$ and $(12, 4)$ solutions to the equation? Explain or show your reasoning.

b. Find the x -intercept of the graph of the equation. Explain or show your reasoning.

5. Find the coordinates of B , C , and D given that $AB = 5$ and $BC = 10$.



(from Unit 2, Lesson 11)