

Please check the examination details below before entering your candidate information

Candidate surname

Other names

Centre Number

Candidate Number

Pearson Edexcel
Level 1/Level 2 GCSE (9–1)

--	--	--	--	--

--	--	--	--	--

Mock Set 4 – Autumn 2018

Time: 1 hour 30 minutes

Paper Reference **1MA1/1H**

Mathematics

Paper 1 (Non-Calculator)
Higher Tier

You must have: Ruler graduated in centimetres and millimetres, protractor, pair of compasses, pen, HB pencil, eraser.
Tracing paper may be used.

Total Marks

Instructions

- Use **black** ink or ball-point pen.
- **Fill in the boxes** at the top of this page with your name, centre number and candidate number.
- Answer **all** questions.
- Answer the questions in the spaces provided
– *there may be more space than you need.*
- You must **show all your working**.
- Diagrams are **NOT** accurately drawn, unless otherwise indicated.
- **Calculators may not be used.**



Information

- The total mark for this paper is 80
- The marks for **each** question are shown in brackets
– *use this as a guide as to how much time to spend on each question.*

Advice

- Read each question carefully before you start to answer it.
- Keep an eye on the time.
- Try to answer every question.
- Check your answers if you have time at the end.

Turn over ►

S59726A

©2018 Pearson Education Ltd.

1/1/1



Pearson

Answer ALL questions.

Write your answers in the spaces provided.

You must write down all the stages in your working.

- 1** Write 136 as a product of its prime factors.

.....
(Total for Question 1 is 3 marks)

DO NOT WRITE IN THIS AREA

DO NOT WRITE IN THIS AREA

DO NOT WRITE IN THIS AREA



DO NOT WRITE IN THIS AREA

DO NOT WRITE IN THIS AREA

DO NOT WRITE IN THIS AREA

2 A biased spinner can land on red, on blue, on green or on yellow.

John is going to spin the spinner.

The table shows each of the probabilities that the spinner will land on red, on blue or on green.

Colour	red	blue	green	yellow
Probability	0.2	0.25	0.15	

(a) Complete the table.

(2)

Hayley is going to spin the spinner 60 times.

(b) Work out an estimate for the number of times the spinner will land on red.

.....
(2)

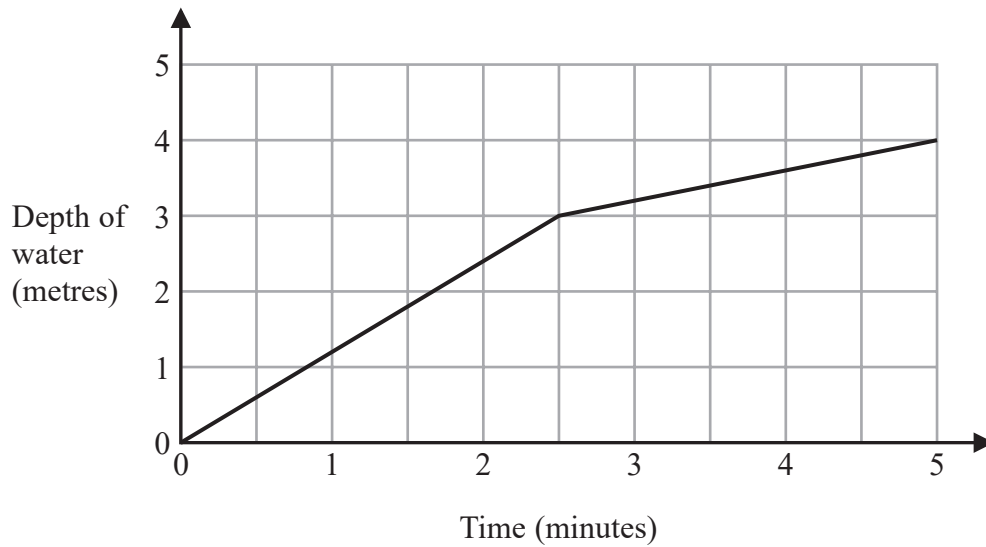
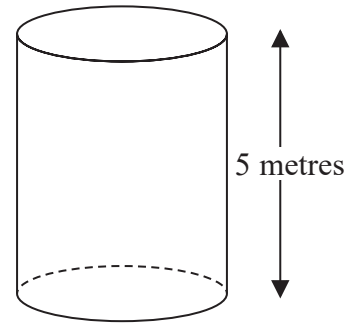
(Total for Question 2 is 4 marks)



3 An empty tank is a cylinder of height 5 metres.

Water is poured into the tank at a constant rate.
It takes 4 minutes to fill the tank completely with water.

Malcolm draws this graph to show the depth of water in the tank as water is poured into the tank.



Write down two things wrong with this graph.

1.....

.....

.....

2.....

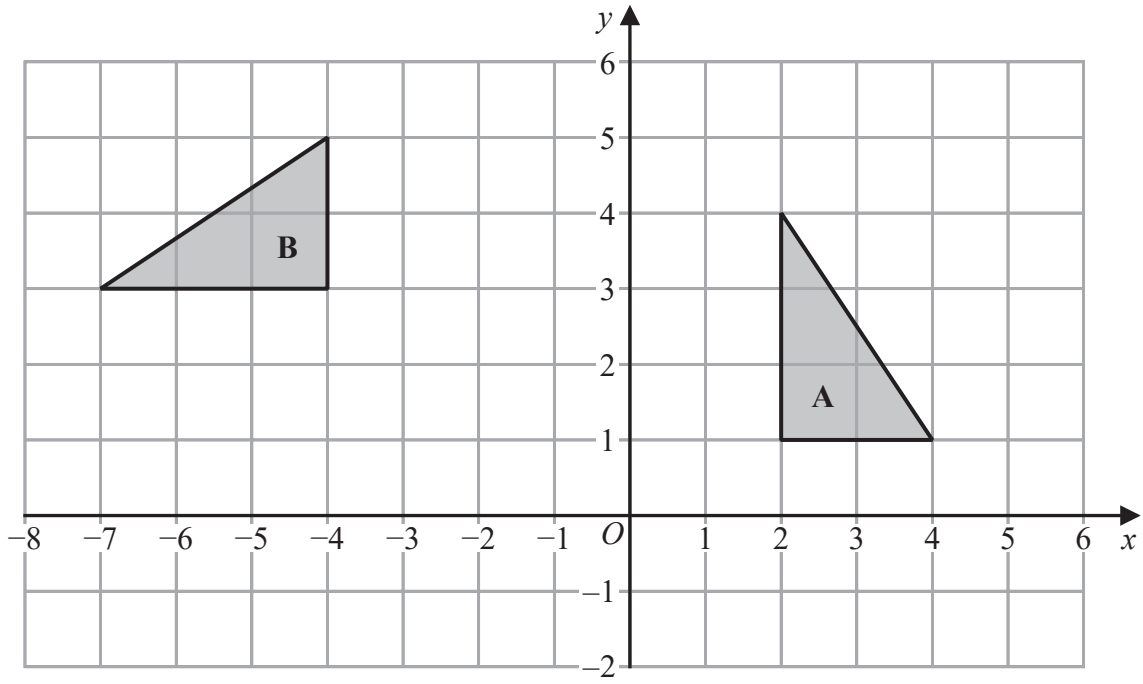
.....

.....

(Total for Question 3 is 2 marks)



4



Describe fully the single transformation that maps triangle A onto triangle B.

.....

.....

(Total for Question 4 is 2 marks)

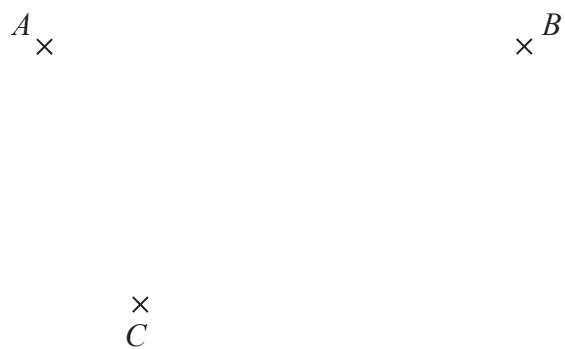
DO NOT WRITE IN THIS AREA

DO NOT WRITE IN THIS AREA

DO NOT WRITE IN THIS AREA



5 This accurate diagram shows three points A , B and C .



Region **R** contains all the points that are

less than 4 cm from each of the points A and C
and nearer to point B than to point A

Show, by shading, the region **R**.

(Total for Question 5 is 3 marks)



6 Each student at a college is going to be given a notebook.

The colour of each notebook will be red or blue or green or orange.

Bill takes a sample of 50 of the students at the college.

He asks each of these students what colour of notebook they want.

The table gives Bill's results.

Notebook colour	red	blue	green	orange
Number of students	18	16	10	6

There are 3000 students at the college.

(a) Work out how many red notebooks Bill should buy.

.....
(2)

(b) Write down one assumption that you made in answering part (a).

Explain how your answer would be affected if this assumption were not true.

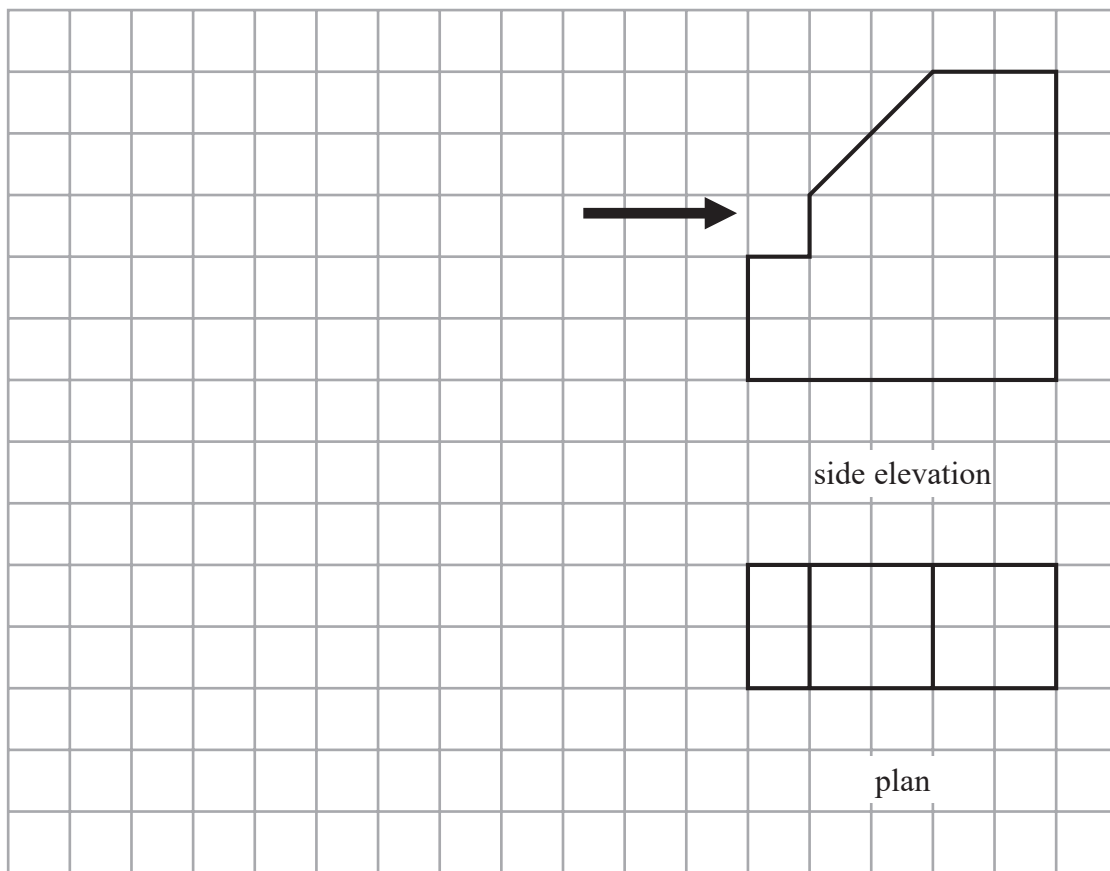
.....
.....
.....
(1)

(Total for Question 6 is 3 marks)



7 The plan and side elevation of a solid prism are shown on the grid.

On the grid, draw the front elevation of the prism from the direction of the arrow.



(Total for Question 7 is 2 marks)

DO NOT WRITE IN THIS AREA

DO NOT WRITE IN THIS AREA

DO NOT WRITE IN THIS AREA



DO NOT WRITE IN THIS AREA

DO NOT WRITE IN THIS AREA

DO NOT WRITE IN THIS AREA

8 Cars are made in a factory for 24 hours every day.

In the factory a car is made every 209 seconds.

- (a) Work out an estimate for the number of cars made in the factory in one year.
You must show how you get your answer.

.....
(4)

- (b) Is your answer to part (a) an underestimate or an overestimate?
Give a reason for your answer.

.....
(1)

(Total for Question 8 is 5 marks)



- 9 Here is a stem and leaf diagram for the heights, in mm, of 25 seedlings.

3	2	4	4	6	9							
4	2	2	4	5	7	7	8					
5	0	2	3	5	6	6	7	7	9			
6	1	2	2	4								

Key:

3|2 represents 32 mm

Work out the interquartile range.

..... mm

(Total for Question 9 is 2 marks)

- 10 Adam buys a computer.

20% VAT is added to the price of the computer.

Adam has to pay a total of £900

Work out the price of the computer before VAT is added.

£.....

(Total for Question 10 is 2 marks)



DO NOT WRITE IN THIS AREA

DO NOT WRITE IN THIS AREA

DO NOT WRITE IN THIS AREA

11 (a) Solve $3x^2 = 108$

.....
(2)

(b) Factorise $x^2 - 2x - 35$

.....
(2)

$$u = \frac{3t}{4} + 2$$

(c) Make t the subject of the formula.

.....
(3)

(Total for Question 11 is 7 marks)



12 (a) Write down the value of 25^0

.....
(1)

(b) Find the value of $49^{-\frac{1}{2}}$

.....
(2)

(c) Find the value of $64^{\frac{2}{3}}$

.....
(2)

(Total for Question 12 is 5 marks)

DO NOT WRITE IN THIS AREA

DO NOT WRITE IN THIS AREA

DO NOT WRITE IN THIS AREA



DO NOT WRITE IN THIS AREA

DO NOT WRITE IN THIS AREA

DO NOT WRITE IN THIS AREA

13 Ben fills a glass with orange juice and lemonade in the ratio 1 : 4 by volume.
He mixes the liquid that is in the glass.

Ben drinks $\frac{1}{4}$ of this liquid.

He then fills the glass using orange juice.

Work out the ratio of orange juice to lemonade, by volume, that is now in the glass.
Give your ratio in its simplest form.

.....
(Total for Question 13 is 3 marks)



14 Ayshab walked x miles at 4 mph.
She then walked $2x$ miles at 3 mph.

- (a) Find Ayshab's average speed for the whole journey.
Give your answer as a mixed number.

..... mph
(4)

The second part of the journey took 25 minutes longer than the first part of the journey.

- (b) Find the value of x .

$x =$
(4)

(Total for Question 14 is 8 marks)



DO NOT WRITE IN THIS AREA

DO NOT WRITE IN THIS AREA

DO NOT WRITE IN THIS AREA

15 $f(n) = (2n + 1)^2 - (2n - 1)^2 - 10$ where n is an integer.

Prove that $f(n)$ is **never** a multiple of 8

(Total for Question 15 is 4 marks)



16 y is inversely proportional to the square of x .
 $y = 1$ when $x = 10$

Find the value of y when $x = 5$

$y =$

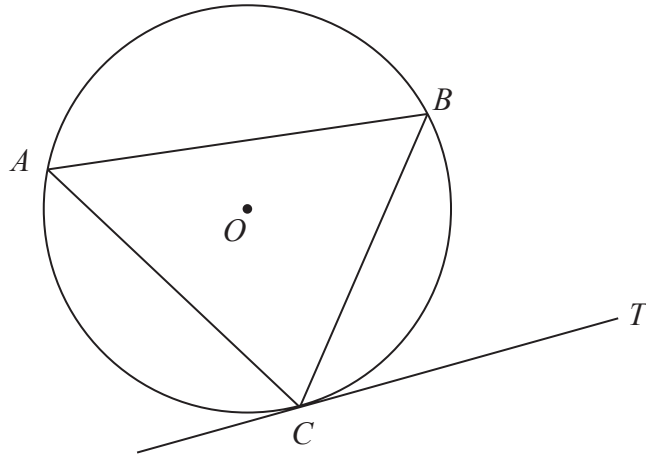
(Total for Question 16 is 3 marks)

DO NOT WRITE IN THIS AREA

DO NOT WRITE IN THIS AREA

DO NOT WRITE IN THIS AREA





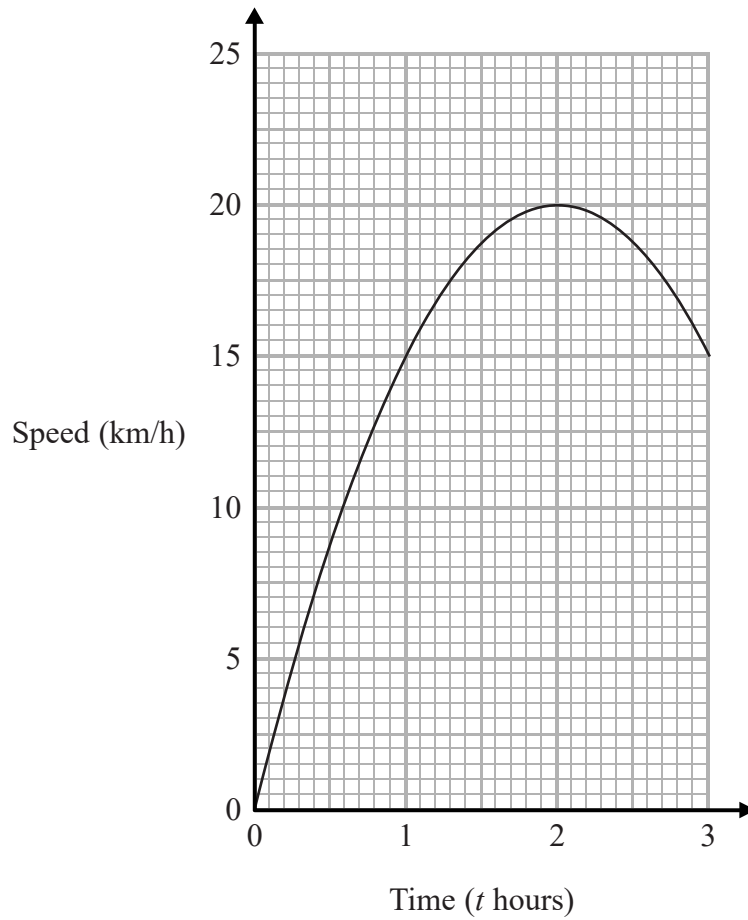
A , B and C are points on a circle, centre O .
 CT is the tangent to the circle at C .

Prove that angle $BAC = \text{angle } BCT$

(Total for Question 17 is 4 marks)



18 The graph gives the speed, in km/h, of a ship t hours after leaving a port.



- (a) Find an estimate of the gradient of the graph when $t = 1.3$
You must show how you get your answer.

.....
(3)

- (b) Interpret your answer to part (a) in the context of the question.
You must give units with your interpretation.

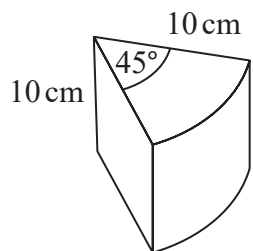
.....
(2)

(Total for Question 18 is 5 marks)

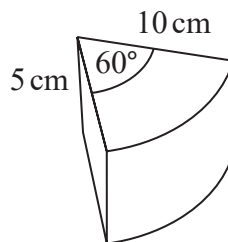


DO NOT WRITE IN THIS AREA

19 Here are two solid prisms, prism A and prism B.



prism A



prism B

The cross section of prism A is a sector, with angle 45° , of a circle of radius 10 cm. The prism has a depth of 10 cm and a mass of 40π grams.

The cross section of prism B is a sector, with angle 60° , of a circle of radius 10 cm. The prism has a depth of 5 cm and a mass of 50π grams.

Express the difference in the densities of the two prisms as a percentage of the density of prism A.

..... %

(Total for Question 19 is 5 marks)



20 Show that $\frac{12 + \sqrt{128}}{1 - \sqrt{2}}$ can be written in the form $a + b\sqrt{2}$ where a and b are integers.

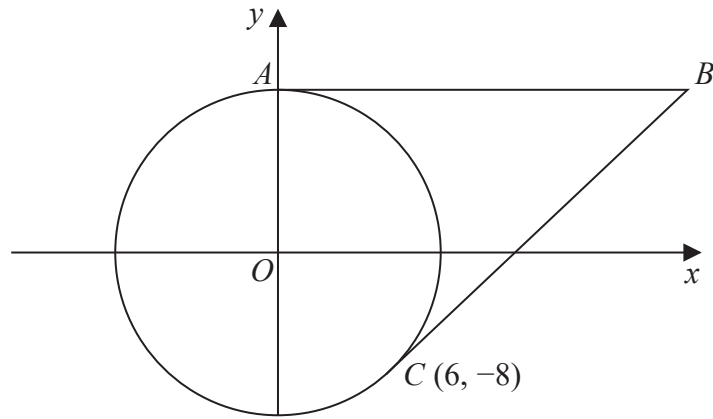
DO NOT WRITE IN THIS AREA

DO NOT WRITE IN THIS AREA

(Total for Question 20 is 4 marks)

DO NOT WRITE IN THIS AREA





The diagram shows the circle with equation $x^2 + y^2 = 100$
 The unit of length on both axes is one centimetre.

The circle intersects the positive y -axis at the point A .
 The point C on the circle has coordinates $(6, -8)$
 The straight lines AB and CB are tangents to the circle.

Find the area of quadrilateral $ABCO$.

..... cm^2

(Total for Question 21 is 4 marks)

TOTAL FOR PAPER IS 80 MARKS

